

Product

designed for lighting areas with vegetation and low natural light, in a 600mm x 600mm module, suitable for installation in standard false ceilings. With the standard 25 °lens installed at a height of 2.9m, it covers a **2.5m²** area. The

aluminum structure allows the lamp to be installed without particular care for cooling.

Three manufactured models

- entry-level: the lamp is on whenever the AC voltage is supplied;
- autonomous (june 2019): the lam executes a built-in cycle;
- advanced (june 2019): the lamp belongs to a network, either **wifi** or **LORA**, a base station allows the user to coordinate different lamps, in order to create customised growth cycles and sceneries; in the **wifi** case, the lamp can also work as an hotspot.

The emitted light is suitable for the growth of any plant, in any phase of its life. The photo-period needs anyway to be adjusted, depending on plant needs.

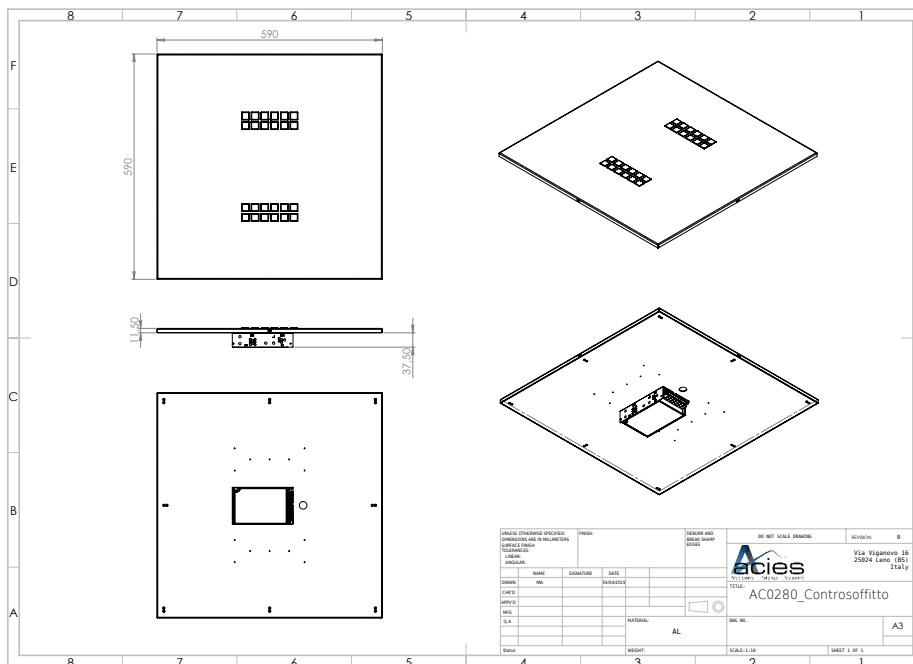
Warning!

The emitted light can be annoying to people, and the light sources can not be watched directly. The installation shall be done considering every ergonomic and health issue.

Technical specifications

Feature	value	unit
Power	70	W
Input voltage	88 ~264	Vac
Input frequency	47 ~63	Hz
Power factor	meets EN61000-2,-3	
Inrush current (230Vac, cold start)	60	A
Emission angle	10 / 25 / 54	°
Covered area (h=2.9m)	0.4 / 2.5 / 6.7	m ²
Wirking temperature	-35~65	°C
Dimensions	600 x 600 x 50	mm ³
Weight	4.6	kg

Technical drawing



Acies designs and manufactures in Italy, in its factory in Leno (BS). Besides standard products, customisations and *partnerships* with industrial customers are possible. The emission spectrum and other aspects regarding industrial plant or laboratory integration, such as industry 4.0 networking, either wired or wireless, need to be discussed on a case-by-case basis.