



To be installed under shelves or inside furniture. Since 2001 installed by high-end kitchen manufacturers, also in the kitchen of the Italian Embassy in Washington. Two manufactured models:

- entry-level: the lamp performs a fixed cycle
- advanced (June 2019): the lamp is on a **wifi** network and works both as an *hotspot*, and as a terminal of a local network.

The lamp can be supplied either by AC voltage (115~230Vac), or DC voltage (15~30Vdc): this allows the on board installation on vehicles and luxury boats. The control board also has an opto-insulated CAN bus, through which it is possible to control and interrogate the individual lamps. This option requires an integration activity by Acies and the installer.



The emitted light is suitable for the growth of any plant, in any phase of its life. The photo-period needs anyway to be adjusted, depending on plant needs.

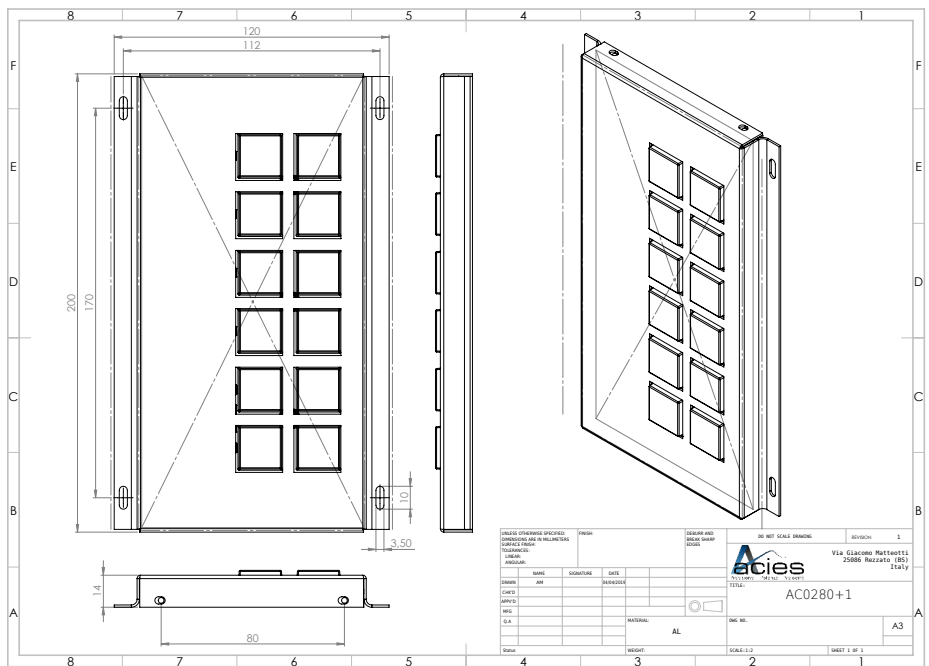
Warning!

The emitted light can be annoying to people, and the light sources can not be watched directly. The installation shall be done considering every ergonomic and health issue.

Technical specifications

Feature	value	unit
Power	20	W
Input voltage (AC)	88~264	Vac
Input voltage (DC)	15~30	Vac
Input frequency	47~63	Hz
Power factor	meets EN61000-3-2, -3	
Inrush current (230Vac, cold start)	40	A
Emission angle	54	°
Covered area (h=0.5m)	0.25	m ²
Working temperature	-35~65	°C
Dimension		mm ³
Weight		kg

Technical drawing



Acies designs and manufactures in Italy, in its factory in Leno (BS). Besides standard products, customisations and *partnerships* with industrial customers are possible. The emission spectrum and other aspects regarding industrial plant or laboratory integration, such as industry 4.0 networking, either wired or wireless, need to be discussed on a case-by-case basis.